

3rd February 2020

Business Intelligence Theorems sponsors local Women's Rugby

Full service data transformation company Business Intelligence Theorems (BITs) has continued their sponsorship support for women and girls rugby for a second year. Old Grammarians Rugby Football Club was founded in 1929 by former pupils of Tottenham Grammar School. It has had quite a nomadic existence over the years, in Enfield and Tottenham before settling at their present home in Winchmore Hill, North London.

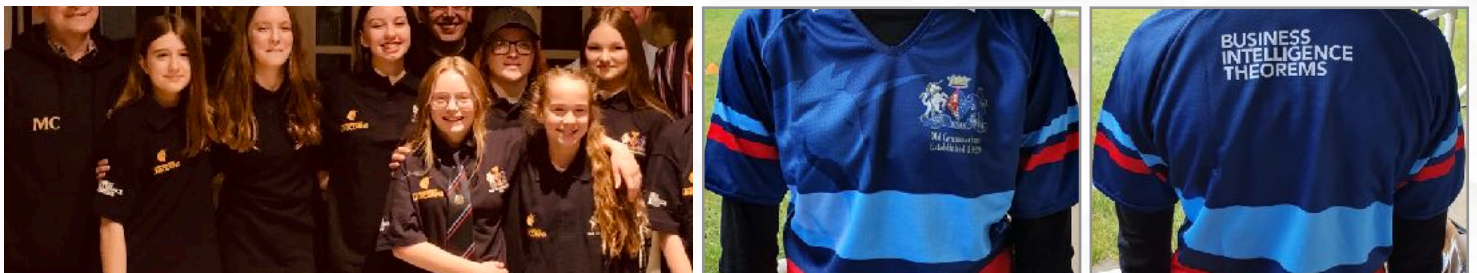
Closing the Gender Gap

Encouraging more women and girls to find their way into sport and physical activity is vital if we're to close the gender gap that exists says Sport England. Their research shows there are a mix of practical and emotional pressures that stop many women and girls from being as active as they would like.

Sport England's vision is that everyone in England, regardless of age, background or ability, feels able to take part in sport or activity. Their ambitious strategy means there is a need to work in different ways to make sure everyone can get the most out of getting active.

BITs Principal Ketan Patel (who also moonlights as Old Grammarian's Women and Girls Chair) explains: "Whilst tremendous work is being done across the globe to close the gender gap it's fair to say there is still a way to go to build upon these foundations to create a level playing field. I'm convinced this will happen by utilising existing resources and investing at a grassroots level."

"It's a privilege to be supporting a local club that welcomes everyone into their family, even more so to help provide the women and girls with resources and an identity for Old Grammarians first official female section in their 90 year history."



Old Grammarians is open to rugby players of all ages, backgrounds and abilities and field several sides, including men, youth and mini (mixed) rugby teams and more recently women's (AKA Unicorns) teams. They have a lively social membership, priding themselves on their inclusiveness and hospitality with members enjoy regular social functions, as well as trips to major rugby matches and plenty of opportunities to socialise in their club bar.

For more information on Old Grammarians visit <http://www.oldgrammariansrffc.com>

For more information on BITs visit <https://bits.company/>